

Towards Timely Intelligence in the Power Grid

Julien Amelot¹, Dhananjay Anand², Thomas Nelson¹, Gerard Stenbakken¹, Ya-Shian Li-Baboud¹, and James Moyne²

¹National Institute of Standards and Technology, 100 Bureau Drive, Gaithersburg, MD U.S.A.

²University of Michigan Ann Arbor, Ann Arbor, MI U.S.A.

ya-shian.li-baboud@nist.gov

Abstract—One of the key lessons learned from the 2003 Northeast Blackout in the United States was the need for improved grid timing and synchronization. The problem began as an isolated issue, but cascaded through the Northeastern grid. Timely situational awareness would likely have contained the area affected by the blackout. To attain situational awareness over a large scale requires synchronized time. Synchronized time enables merging data from remote sources, maintaining tolerable measurement uncertainty, and forensic analysis to build knowledge on preventing future problems. Phasor measurement units (PMUs) rely on global synchronized time to consolidate measured data points from remote substations on the grid allowing situational awareness and the ability to anticipate potential issues and take the necessary corrective actions to prevent or minimize loss of power. Global synchronized time is currently being provided by the Global Positioning System (GPS); however, potential issues and limitations motivate another precision timing solution. Network time synchronization, particularly IEEE 1588 Precision Time Protocol (PTP), can reliably sustain sub-microsecond time precision. The National Institute of Standards and Technology (NIST) has developed a timing testbed to characterize, assess, and monitor the performance of network timing in various test scenarios. Furthermore, in conjunction with the NIST Synchrophasor Lab, a prototype IEEE 1588 PMU was built and tested. The metrics, software and test methods developed would enable substations, manufacturers of power systems equipment, and IEEE 1588 certification labs to ensure their 1588 network and products can meet the requirements of next-generation power grids. The paper provides the motivation and applications for the NIST timing testbed, and highlights the metrics, test methods and software tool that have been developed.

Key words: *network time synchronization, power grid, Smart Grid, testbed, phasor measurement units, 1588*

I. INTRODUCTION

An aspect of the Smart Grid vision is one in which the power grid is capable of monitoring and healing itself [1]. Improved autonomy in power grid control will require the ability to measure and gather necessary data for assessing grid health and resource availability, a reliable network to communicate the data, and dynamic, high-fidelity computational models to make timely, intelligent decisions to minimize adverse impacts.

Many technical challenges exist in coordinating and maintaining supply and demand within the grid. Electricity flows at close to the speed of light and is currently not economical to store [2]. Therefore the grid must continuously balance the generation and demand of the electricity in real-time.

One of the largest and most complex grids, the North American electricity grid, is comprised of interconnects, with the contiguous U.S. covered by the Eastern Interconnection, Western Interconnection and Electric Reliability Council of Texas (ERCOT) Interconnection (Figure 1). Interconnects enable the grid to compensate for local variations in the load and generation [3].

However, interconnects also increase the potential risk of large system disturbances such as cascading blackouts. The history of large-scale blackouts began shortly after the electric systems in North America became interconnected [4]. With the Eastern Interconnect established in 1962, the first large-scale event

was the Northeast blackout of 1965 affecting more than 30 million people for up to 13 hours. As a result, the North American Electric Reliability Council (NERC) was established by the electric utility industry to ensure the bulk electric system was reliable, adequate and secure [4]. Blackouts can have significant safety and economic impact. The Northeast blackout of 2003 affected more than 50 million people, contributed to 11 deaths and had an estimated cost of \$6 billion [3].

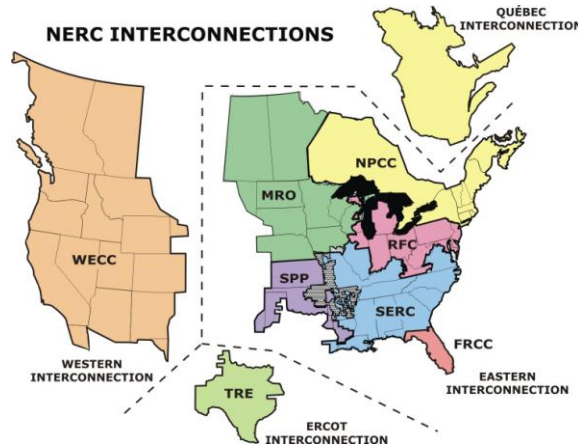


Figure 1. North American interconnects in the electrical grid.

The current grid consists of a hybrid of modern and legacy measurement and control equipment, which makes it a challenge to dynamically track disturbances. Furthermore there are insufficient monitoring and control mechanisms to isolate power disturbances. Grid control operators view data that are both sparse and at least 30 seconds old [5], which makes it impossible to detect and isolate cascading blackouts that are occurring on the order of tens of seconds [6].

The Smart Grid envisions a means to provide a planned nationwide network that uses information technology to deliver electricity efficiently, reliably and securely and permit a bi-directional flow of both electricity and information [7]. The National Institute of Standards and Technology (NIST) Smart Grid Conceptual Model, Figure 2, depicts a communication network comprising market, operations, service provider, bulk generation, transmission, distribution and customer. To provide situational awareness and intelligence, a multi-resolution, high fidelity, dynamic model must be available to detect nascent deviations and to reconfigure itself to isolate the problem while continuing to meet the customer demands on generation, transmission and distribution [5].

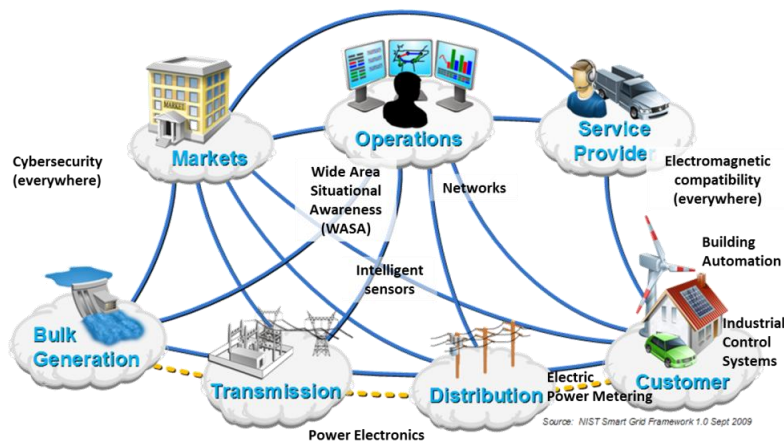


Figure 2. NIST Smart Grid Conceptual Model.

II. SYNCHRONIZED TIME IN THE POWER GRID

A. Why is Synchronized Time Important?

Synchronized time is important for analyzing system disturbances, maintaining situational awareness, and also for providing timely remedial actions to prevent system instabilities such as brownouts and cascading blackouts. Analysis of the 2003 blackout by NERC included the recommendation to “install additional time-synchronized recording devices as needed [8].” The recommendation came after it took two months to establish the exact sequence of events to understand the root causes that led to the cascading blackout.

Leveraging the lessons learned from the 2003 blackout, the post mortem analysis of the 2011 Southwest blackout - in which a sequence of over 100 notable events for a duration of 11 minutes was constructed - was a much more efficient process [6]. However, the timeline for root cause analysis still took two days to establish. The delays were attributed to varied time-stamping methodologies, formats, and sources of synchronization, where not all of the time-stamps were synchronized to the NIST standard clock in Boulder, Colorado [8].

In order to execute remedial actions to prevent cascading failures, the sequence of events need to be established in real-time, and physical models of the system must be updated continuously and instantaneously. Reports from both blackouts cite the need for improved real-time *situational awareness*. Without understanding of real-time operational maintenance and resource availability, a problem affecting one area of the grid can rapidly, within minutes, cascade to affect neighboring transmission and distribution lines. A clear understanding of the operational, health, and power demand conditions is necessary to take timely remedial actions.

In addition to establishing the sequence of events, control system operators for the electrical power grid rely on the estimated state of the power system to make control decisions. For improved accuracy of the state estimation, it is necessary to feed existing estimators with higher frequency real-time measurements to understand the transient dynamics of the physical processes. Synchrophasors, which use global time to serve as a reference for measuring current and phasor measurements, provide a means to measure the real-time health of the grid. Phasor Measurement Units (PMUs) are therefore essential to realize the goals of situational awareness and intelligence. As time serves as a reference, timing jitter directly translates to uncertainty in the phasor measurements.

Figure 3 illustrates a steady-state wave form of a power signal (green) and how simulated intermittent steps in the time can manifest as phase shifts in the measured signal (red). To account for the reference noise, control models must allow for a tolerance bound (yellow), which contributes to the uncertainty of the phasor measurement. The simulated intermittent phase shifts are caused by four time synchronization updates over one period which lasts 16.67 ms for a 60 Hz signal. The simulation is intended to provide a visual of how inaccurate time synchronization can create uncertainty in phasor measurements. For illustration purposes, the 1 ms offset is an overestimated error, as the power industry clocks can maintain time accuracy within one microsecond. In practical situations, the synchronization update would not occur as frequently. Distributed time synchronization algorithms tend to slew the time for synchronization correction to ensure time does not jump forward or backward. When timing uncertainty is the sole source of error, 26 μ s translates to 1 percent Total Vector Error (TVE), while a 1 ms offset becomes a 38 percent TVE. With more reliable and robust timing precision, tighter tolerance bounds can be achieved. Lower uncertainty thresholds would enable earlier detection of nascent discrepant behavior.

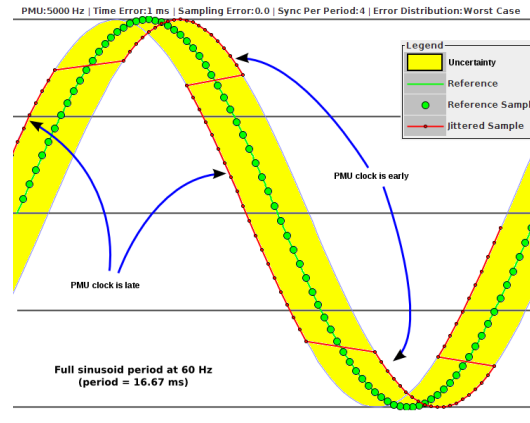


Figure 3. Inaccurate time updates can manifest as phase shifts.

B. Methods and Challenges of Distributed Time Synchronization

The U.S. power grid currently uses the Global Positioning System (GPS) to provide a common source of Coordinated Universal Time (UTC). Due to the wide area of the grid, this is the most economical solution across transmission and distribution channels. The GPS has a timing accuracy of 100 ns. The uncertainty of the UTC time is also dependent on the GPS receiver. Relying solely on GPS leads to several issues. Within an electrical substation, there are devices that may not have a line of sight to the GPS or require additional ports to configure access to GPS synchronized equipment. GPS can also become unavailable due to varying atmospheric conditions, unintentional interference, or malicious attack. It has been demonstrated that GPS is also susceptible to attacks including spoofing [9] and jamming [10].

Within a substation, Inter-Range Instrumentation Group (IRIG)-B signals can be used to propagate time to devices. IRIG-B is designed to guarantee one millisecond resolution and accuracy. Because the unmodulated IRIG-B signal is a digital signal, which can have the fundamental accuracy of digital logic, IRIG-B signal generation hardware can be built to support microsecond resolution and accuracy [11]. Sub-microsecond accuracy must take into account propagation time and ringing. IRIG-B also requires a dedicated coaxial cable or twisted-pair connection.

Network-based timing uses the commonly available Ethernet data port, which eases the dissemination of a traceable time source and is more robust under varying atmospheric conditions than sources based on satellite. With the Network Time Protocol (NTP) and its simplified form, Simple Network Time Protocol (SNTP), accuracies can be achieved on the order of milliseconds. The challenges of the network-based timing protocol lies in the non-deterministic nature of Ethernet. Determinism is one of the keys to achieving sub-microsecond accuracy. Most network-based protocols rely on symmetrical round trip delays. Network jitter or packet delay variation (PDV), can degrade accuracy since the offsets are calculated based on round trip delay of the time packet, divided by two. Queues in the switch and differing sources of the time-stamps can all contribute to variation in end-to-end network delays. However, there are kernel level and hardware optimizations that can be made to improve the determinism. IEEE 1588, the Precision Time Protocol (PTP), provides several standardized mechanisms to achieve greater determinism. To minimize jitter on the network stack, accurate timestamps must be generated at the Physical layer of the Open System Interconnection (OSI) Network Stack Model [12]. Within the network, Transparent Clocks provide a known residence time, thereby minimizing the impact of jitter due to queuing delays. IEEE 1588 can readily achieve sub-microsecond accuracies with the use of hardware time-stamping on network nodes. However, without proper network security countermeasures in place, IEEE 1588 and other network-based timing are susceptible to a variety of attacks including spoofing, masquerade, and denial of service (DoS).

C. Industry Standards

The IEEE Standard C37.118 for Synchrophasor Data Transfer for Power Systems requires the vector difference between the measured and ideal phase and magnitude values to be on the order of 1 percent TVE [13]. However, the TVE is an aggregation of errors based on instrumentation conversion latencies, phasor measurement processing latencies, and time synchronization offsets [14]. If timing was the only source of error, the time precision budget would be 26 μ s at 60 Hz. However, due to other sources of errors, the error budget for time uncertainty is reduced to the 1 μ s requirement specified in the IEEE 1588 Power Profile [12]. While the 1 μ s goal is effective for situational awareness and fault detection, it has yet to be determined if the timing accuracy would be sufficient in providing information to achieve the measurement uncertainty needed for real-time dynamic modeling of grid conditions to realize fault anticipation and situational intelligence.

The importance of time synchronization in the power grid has led to several industry-specific timing standards. One of the standards is IEEE C37.238, the IEEE Standard Profile for Use of IEEE 1588 Precision Time Protocol in Power Systems Applications [12]. The profile provides additional specifications to IEEE 1588 to ensure the power system requirements are met. A NIST testbed originally envisioned for developing test methods for distributed timing performance and providing a venue to develop prototypes of distributed network timing measurement and control techniques has been expanded to ensure scenarios over at least 16-network hops can be established.

The International Electrotechnical Commission (IEC) 61850 is a key communication standard for substation automation and protection field equipment operating under real-time or non-real-time conditions [15]. The Smart Grid Priority Action Plan (PAP) 13 group, tasked to harmonize the IEEE C37.118 and IEC 61850, coordinated the development of IEC/Technical Report 61850 Part 90-5: Use of IEC 61850 to transmit synchrophasor information according to IEEE C37.118. The standard provides a means of propagating synchrophasor data from PMUs to Phasor Data Concentrators (PDCs) to the Wide Area Monitoring, Protection, and Control (WAMPAC) and other control center applications. The standard also specifies how to harmonize the time-stamp formats between IEEE C37.118 and IEC 61850 [15].

III. THE NIST TIMING TESTBED

The NIST timing testbed, as shown in Figure 4, was envisioned to provide a venue to develop measurement and test tools to assess the feasibility, reliability, and robustness of meeting the timing requirements in the power grid. The initial goal was to create measurement tools for the performance of IEEE 1588 in various aspects including, but not limited to, accuracy, reliability, security, and conformance.

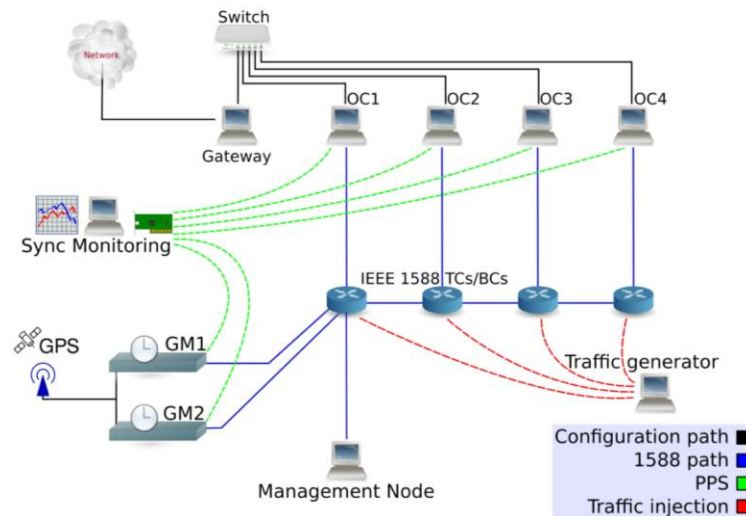


Figure 4. A sample view of the NIST IEEE 1588 Testbed.

A. Measurement Tools and Metrics

The testbed includes several methods for measuring the timing offset between the source and the network nodes. The oscilloscope has sub-nanosecond uncertainty, but is limited by the number of devices it can measure. In order to ensure scalability to a large number of devices with minimal cost to measurement accuracy, a digital measurement device was developed that measures up to 64 devices simultaneously with a time uncertainty of 8 ns, which is well below the industry requirements. A complete software measurement tool, the PTP Dashboard, based on the reported offsets from the PTP clock's management node messages was also developed. The dashboard measurement data can be verified with the data acquisition card while providing a visualization of the PTP network and device stability over time [13].

Based on the measurement tools, several characteristics of the PTP devices can be readily measured and observed. With respect to the slave node, the offset, the histogram over time of the offsets, the mean path delay, convergence rate, and holdover rate can be assessed. Network measurements are also an important aspect in understanding the stability of the system. The dashboard enables a view of the peer-to-peer delays for Transparent Clocks (TCs).

B. Devices

The testbed was created to ensure practical test scenarios can be deployed, short of having an actual substation network. Table 1 specifies the current devices available in implementing the test scenarios. The testbed has a PTP network comprising the UTC time source (GPS antenna connected to the PTP Grandmaster), the distributed ordinary clock (OC) nodes which simulate time synchronized Intelligent Electronic Devices (IEDs) in the substation, and PTP transparent and boundary clocks (TC and BC, respectively). To determine offset accuracy, each node can output a Pulse Per Second (PPS) signal, which can then be simultaneously measured with an oscilloscope and a data acquisition card to verify the accuracy of the offset measurements. To ensure scalability of the simultaneous measurement of the offsets between grandmasters and slave nodes, the management node can run the PTP Dashboard software to provide a general view that the timing precision in the network is maintained within industry specifications. The accuracy of the PTP Dashboard measurements has been corroborated with the data acquisition card and oscilloscope to ensure it reports the results accurately. The network traffic generator device contains multiple Ethernet ports to provide simultaneous injection of traffic at varying loads and patterns. Since Ethernet is especially prone to non-deterministic behavior under stressed network conditions, the traffic generator evaluates the implementations of the TCs ability to accurately measure residence times under device duress.

Table 1. Testbed Equipment.

Type	Device	Quantity (and specification)
Measurement	Oscilloscope	2 (sub-nanosecond resolution, 4 analog inputs per oscilloscope, 16 digital inputs)
Measurement	FPGA-based Data Acquisition Card	1 (8 ns resolution, supports 64 devices, can be expanded to 200 devices)
Network	PTP Transparent/Boundary Clocks	21
Clock Source	PTP GPS Grandmaster	4 (1 Rubidium, 3 Oven-Controlled Crystal Oscillators)
Clock	PTP Enabled PCI Cards	10
Network	Traffic Generator	1

C. PTP Dashboard

A Java-based open source software measurement, configuration, and test deployment tool, the PTP Dashboard, provides visualization for easy assessment and understanding of the network timing performance as well as longer term PTP network and device stability [16]. The measurement results from the dashboard can be verified with the PPS data acquisition board. The dashboard also includes a prototype implementation of automated conformance testing that not only verifies the implementation of the message but also whether the behavior of the device is what it claims to be. If the device claims to have a synchronization interval from 2^{-3} to 2^3 s, the dashboard would compute the average number of synchronization packets received for each of the specified intervals. Figure 5 shows the graphical user interface of the dashboard, which is based on the information and control using the standard management messages. Because the dashboard assumes correct and sufficient implementation of management messages, not all of the options may be available if the management node messages are not implemented by the PTP device. The dashboard can provide configuration of the devices through the standard set of management messages. Furthermore, vulnerability tests can be readily deployed with the options available in the upper left hand corner.

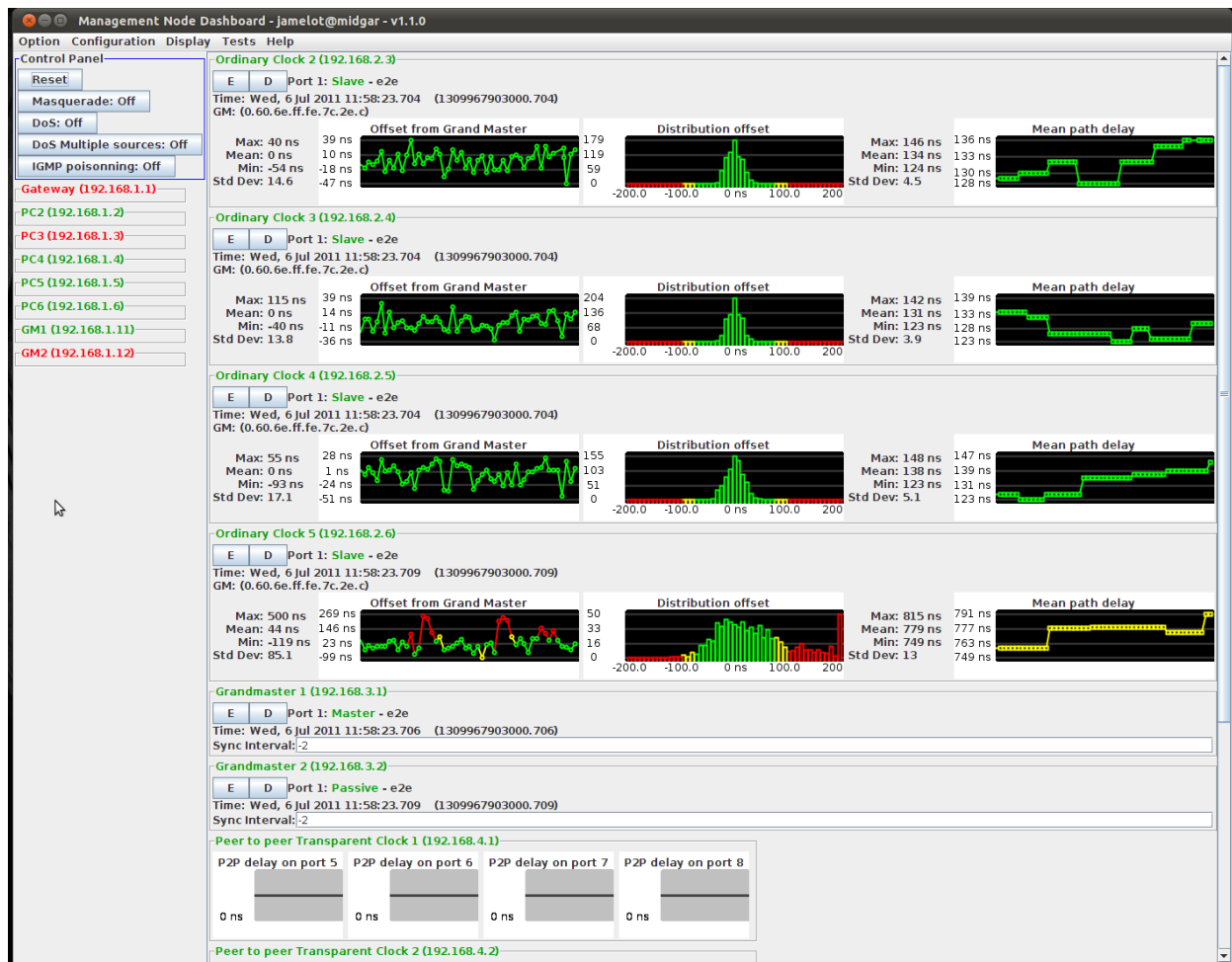


Figure 5. The PTP Dashboard enables monitoring and configuration of the network as well as automated deployment of different test profiles and scenarios.

D. Test Scenarios

Our test scenarios are based on several criteria related to timing accuracy, reliability, and interoperability. With respect to timing accuracy, test methods are used to examine how network loads, patterns and

topology can impact distributed timing performance. Tests were also developed to observe the implementation aspects such as convergence rates and holdover [16]. As shown in Figure 6a, the convergence test enables statistical analysis by allowing the user to run the experiment multiple times automatically. Automated testing is particularly useful for experiments that have non-characterized parameters impacting timing accuracy, such as the state of the quartz, the environmental temperature, algorithms, etc. A large number of iterations would provide more statistically significant results. Each iteration had a different maximum offset ranging from a little over 2 μ s to within 500 ns before the device converged. Given that critical applications require anticipation of worst case scenarios, OC4 can be estimated to converge within 1 minute after a cold start. Figure 6b illustrates the effect of different clocks and their drift rates during a holdover test. Device C4 has an Oven-Controlled Crystal Oscillator (OCXO), have the lowest drift rate; one experimental iteration showed the clock was within 1 μ s for up to 5 minutes. The other devices with Temperature-Controlled Crystal Oscillators (TCXO) drifted over the threshold (outlined in black) in about one minute. Additional tests include how the clocks' accuracies respond to different synchronization intervals (Figures 7a and 7b) [17]. The OCXO clock can sustain longer synchronization intervals of up to 8 seconds while maintaining a standard deviation of less than 16 ns. On the other hand, TCXO clocks quickly degrade at synchronization intervals of 2 s and above. One point to note is Device A, which has a TCXO clock but the standard deviation was only slightly higher than the OCXO clock at around 20 ns. The behavior demonstrates that clock quality is not the only attribute affecting precision performance. Algorithms can be optimized to compensate for lower clock quality. To ensure the robustness of the results a large number of iterations and prolonged durations should be assessed. The number of iterations, the duration of each test and test conditions will have to be specified by industry based on practical operating conditions before device convergence and holdover behavior can be effectively characterized for critical grid applications. The testbed provides a prototype of what tests can be done and can provide further guidance in device characterization.

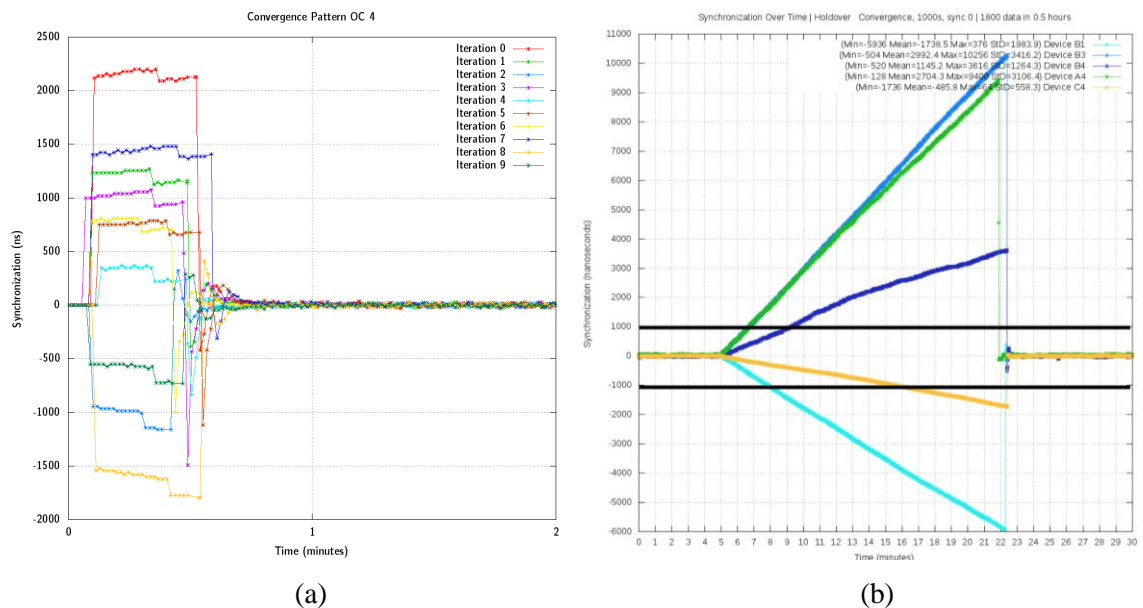


Figure 6. The testbed provides test scenarios to characterize clock behavior. (a) Statistical analysis of convergence of an ordinary clock (OC) and (b) drift rates of a set of OCs during a holdover test.

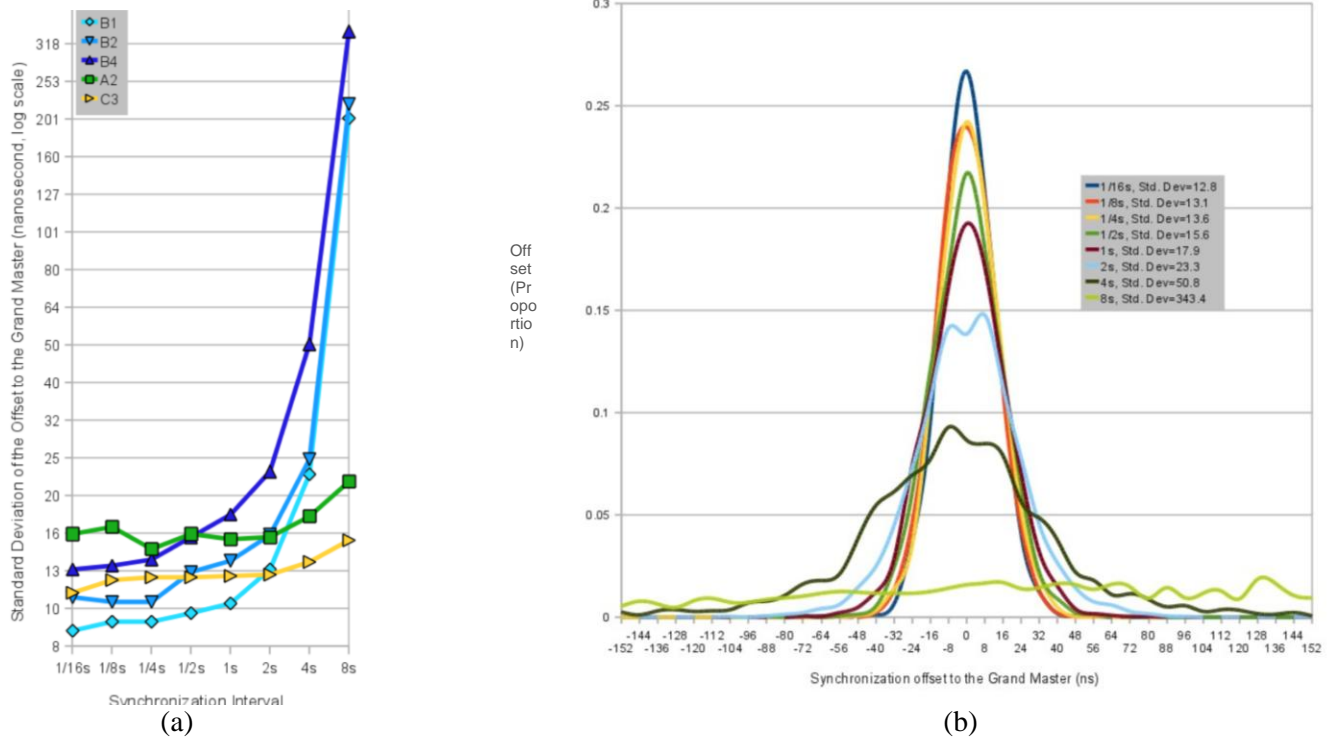


Figure 7. Clock precision response to frequency of synchronization (a) expressed as standard deviation of offset from the master for five different slave devices (with C3 as an OCXO device and all others as TCXO devices) and (b) as a histogram of the frequency of offset over time for a single TCXO device.

Reliability is assessed in terms of susceptibility to security vulnerabilities, stressed network conditions, and network synchronization resilience to a Grandmaster switch. Previous work has reported that some devices were susceptible to masquerade when integrated into the network in default mode [17]. The attacks implemented in the PTP Dashboard include masquerade, DoS, and multicast poisoning. Another failure condition occurs when a link in the network topology becomes unresponsive. Ring topology is typically used in critical applications as it prevents a single point of failure. The ring topology can be set up as shown in Figure 8a. Depending on the ring protocol implemented, the resilience of the timing protocol can be affected [16]. With the Rapid Spanning Tree Protocol (RSTP), the network did not maintain the required timing precision. When the link fails in RSTP, packets are not routed correctly, leading to packet loss. The protocol takes tens of seconds to recover from the failure scenario. The poor synchronization performance is due to lost packets during the link failure. Regardless of the quality of the quartz, the synchronization accuracy of the slave node can be impacted by the loss and re-route of the packets. The re-route of the packets can introduce path delay variation (PDV) depending on the location of the node. In contrast, with the Media Redundancy Protocol (MRP), where there is a guarantee to respond to a link failure on the order of tens of milliseconds, the results after a link failure show a consistent synchronization offset well within 200 ns range after 50 runs [16].

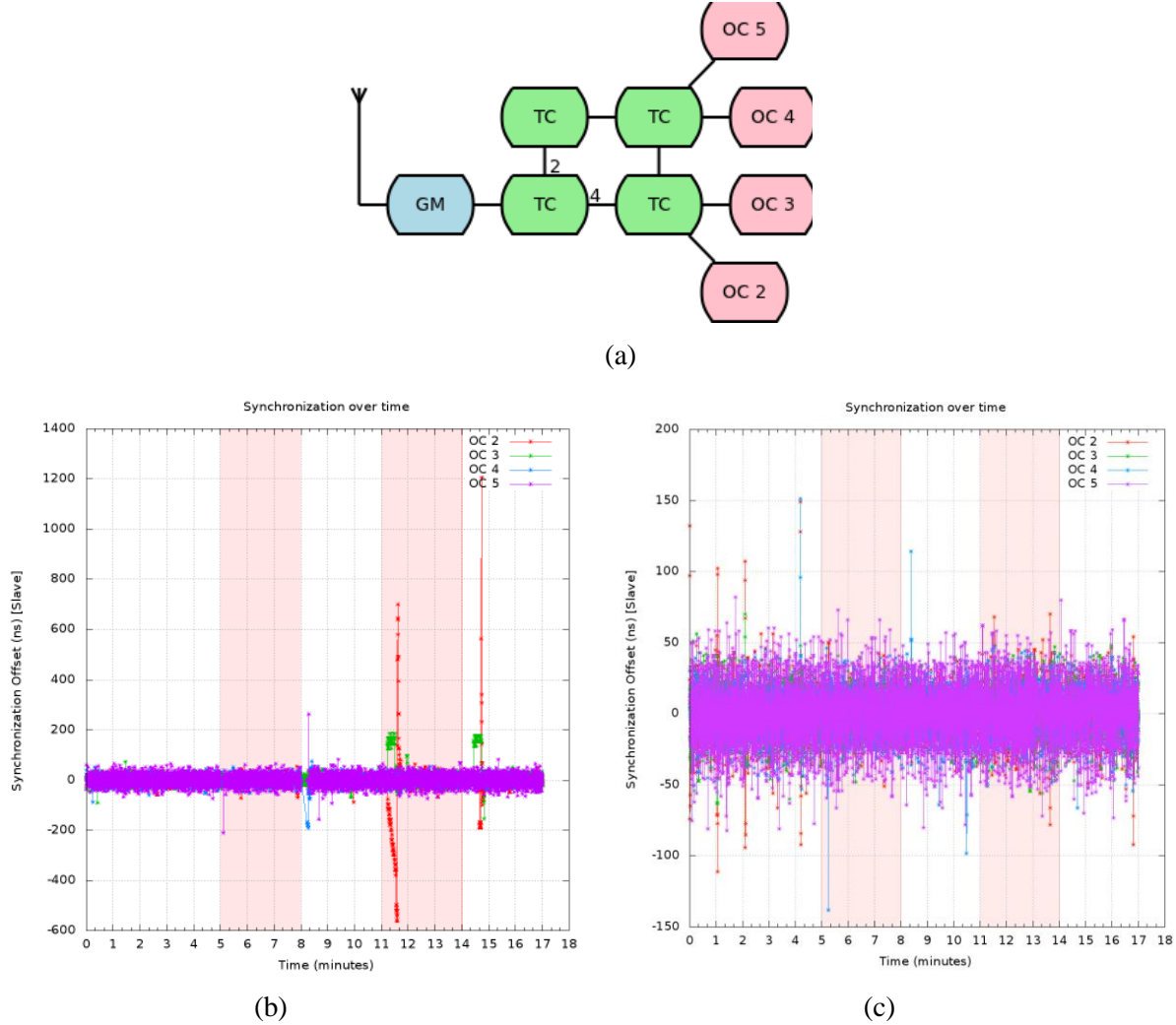


Figure 8. Impact of ring topology link failure. The experiment ensures each slave node in the topology has its network path to the Grandmaster broken and re-connected at least once. (a) Ring topology of 4 TC nodes, synchronization offset before, during (shaded region) and recovery from link failure in a ring topology using (b) the Rapid Spanning Tree Protocol and (c) the Media Redundancy Protocol.

Lastly, interoperability of devices is assessed with respect to conformance to IEEE 1588 Standard version 2 as well as the IEEE 1588 Power Profile. A table of test requirements has been developed at NIST. An example of a test involving conformance to the synchronization interval specification has been implemented in the dashboard. Conformance testing is only a subset of interoperability testing that needs to be developed. Additional interoperability tests still need to be developed, as conformance testing is necessary but not sufficient for interoperability.

The testbed also enables assessment of prototype device uncertainty. Figure 9a shows a prototype of a commercial PMU integrated with an IEEE 1588 slave card via an IRIG-B signal. The prototype device and an ordinary PMU were connected to the NIST PMU calibration system where the PMU outputs the voltage and current phase signals according to C37.118 specifications. The TVE for both devices were determined to an uncertainty of no greater than 0.3 percent. Results (Figure 9b) show that both PMUs have similar TVE, and therefore the PTP-synchronized PMU is as effective as the IRIG-B synchronized PMU for a duration of over 40 hours (Figure 9c) [18]. Using IEEE 1588 provides the advantages of having time synchronization done through the network port, compensation for cable length, potential for better timing accuracy, ease of architecting the network topology, etc.

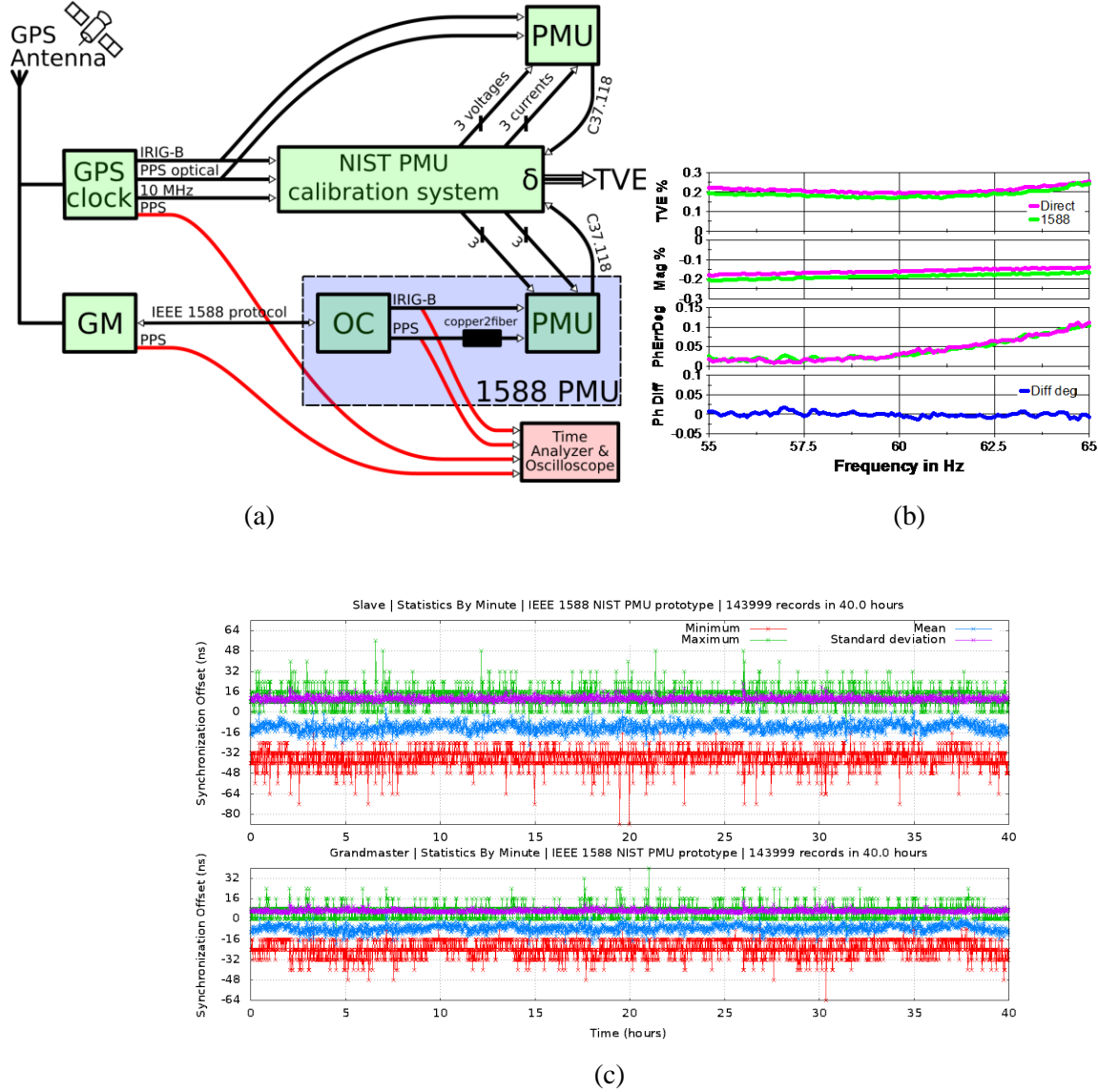


Figure 9. Reference implementation of a IEEE 1588-based PMU. (a) The reference implementation and test system. (b) shows the results of the TVE from both the direct and IEEE 1588 link and (c) shows the synchronization offsets between the IEEE 1588 Grandmaster (GM) and the GPS clock (bottom graph) as well as the offsets between the IEEE 1588 OC and the GPS clock (top graph) to demonstrate that the time is independently compared.

The test scenarios enumerated above are just the tip of the iceberg towards providing a research venue to understand performance capabilities and development of metrics to characterize network timing behavior.

IV. TOWARDS SITUATIONAL INTELLIGENCE

The term *situational intelligence* relates to improving the ability of a network operator to respond to disturbances such as outages and load/capacity fluctuations. Typically, situational intelligence encompasses automated model-based control and real time diagnosis functions. Precise clocks are essential to the performance of both these functions especially over large areas where communication bandwidth may be limited.

Improved analysis and evaluation tools for modeling, simulation, and control that leverage precise clock synchronization are currently being explored by NIST collaborators at the University of Michigan. The

NIST timing testbed can be augmented to test and evaluate how changes in timing accuracy affect situational intelligence.

Electrical power control stations use state estimation based on measurements from substations to monitor the state of the power system. Algorithms have been designed to leverage accurate clocks to improve the model-based control of phase and frequency within low voltage distribution circuits [19]. Figure 10 shows a hybrid implementation of a model “ M ” and a physical process “ P ” running in parallel. In a hybrid system a control input in the form of a user specified set point or a target state (V_{ref}) is transmitted to both M and P simultaneously. An accurate model is essential to reliably estimate the state of the physical system (x). To ensure that the estimate \hat{x} tracks x under all operating conditions, the model used for control must be continuously updated with data from the physical process. Network measurements suffer degradation due to delays in propagation or due to bandwidth constraints. Time skews in the data acquisition process and the time it takes for the state estimate to converge, create additional uncertainty in the model [20]. The output of the physical process, labeled y , travels through the communications network, where additional uncertainty can be introduced and becomes z . As shown in Figure 10, observations from the physical system are reported over a network (labeled z) and the error residual between the model M and the physical system P is used to adapt M when necessary. For large electrical networks, M can involve thousands of individual component models, and updating the model requires precise and timely measurements from P .

The availability of data quality parameters such as clock uncertainty and offset enables more robust integration of physical observations and model-based estimates [21] including the convergence of estimates from M and the measurements of P . One of experimental studies still to be conducted is to evaluate the impact of the network interface (through network jitter and delay) on the estimates of clock uncertainty and on the precision of the measurements from P . Ultimately, a performance evaluation of an entire model-based system from the perspective of model robustness and convergence can be achieved using the testbed.

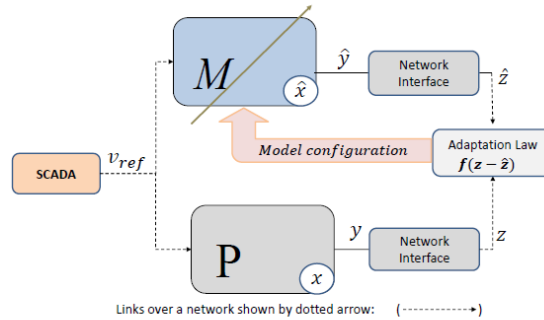


Figure 10. A model and physical process used together as a hybrid system.

V. CONCLUSION AND FUTURE WORK

A more intelligent grid would enable a sufficient understanding of the source of problems on the grid and the resources available to take corrective actions, and to then expeditiously execute control decisions to isolate and correct the fault while maintaining healthy grid operations. Precision timing is of the essence with respect to both measurement uncertainty of grid health as well as the ability to expeditiously merge information from heterogeneous sources in a wide area distributed network such as an interconnect or a power grid. Confidence in the synchronized time and rapid communication between nodes on the grid would enable the development of robust, dynamic models needed to make timely remedial actions.

Furthermore, tightened tolerance windows can be attained by minimizing measurement uncertainty if time synchronization error is reduced. Minimizing measurement uncertainties of PMUs enable earlier detection of more subtle, discrepant behavior.

The current testbed provides an initial set of test methods, performance metrics, and measurement and dynamic visualization tools to uncover the additional issues and challenges that need to be addressed before a robust timing distribution network can be relied upon to make critical real-time decisions. The testbed also provides a venue to develop prototype ideas such as a 1588-based PMU to ensure it is as accurate as the PMU synchronized by IRIG-B. Simulations have also been done to assess how the use of precise time-stamps can improve model-based estimation with dynamic sensor measurements.

The PTP Dashboard can be extended to include conformance tests for the IEEE 1588 profile. An initial set of requirements and tests have been drafted. Formal test methods will need to be developed and can be integrated into the PTP Dashboard for automated testing. Once formal test methods are developed, the PTP Dashboard can be utilized for the standardized, automated execution and reporting associated with these tests. Additional guidelines and standards can also provide the industry with greater assurance of the transparent clock performance especially with respect to where the ingress and egress times are time-stamped. A common time format regardless of the time distribution protocol would help facilitate the expeditious merging of data throughout the grid to rapidly form a dynamic view of the grid conditions. Security and reliability given unavailability of GPS or the timing protocol also needs to be addressed. The next version of 1588 is expected to include security as part of the standard. Therefore security test methods to evaluate conformance and assess vulnerabilities would be important. Lastly, as dynamic grid control models become a reality, the testbed can serve as a venue to understand the impact of timing uncertainty on the system model accuracy needed to achieve timely situational intelligence.

ACKNOWLEDGMENT

We would like to thank Kevin Brady for the support of this work. We would also like to thank all of those who have participated in the testbed effort including Clement Vasseur who provided the design and implementation of security tests, James Gilsinn who provided the program development to execute the traffic generator and Jeffrey Fletcher who worked on the simulation of network control using precision timestamps. We would also like to thank our collaborators who have given us invaluable guidance and feedback including Gerald FitzPatrick, Kang Lee, Galina Antonova, and Dawn Tilbury.

Certain commercial equipment, instruments, or materials are identified in this paper in order to specify the experimental procedure adequately. Such identification is not intended to imply recommendation or endorsement by the National Institute of Standards and Technology, nor is it intended to imply that the materials or equipment identified are necessarily the best available for the purpose.

REFERENCES

- [1] Office of the National Coordinator for Smart Grid Interoperability. NIST Framework and Roadmap for Smart Grid Interoperability Standards, Release 2.0, NIST Special Publication 1108R2.
- [2] U.S. – Canada Power System Outage Task Force. Final Report on the August 14, 2003 Blackout in the United States and Canada: Causes and Recommendations. U.S. Department of Energy, April 2004.
- [3] J.R. Minkel, “The 2003 Northeast Blackout—Five Years Later,” *Scientific American*, August 2008.
- [4] D.W. Hilt, August 14, 2003, Northeast Blackout Impacts and Actions and the Energy Policy Act of 2005, ISPE Annual Conference 2005.
- [5] M. Amin and P. F. Schewe, “Preventing Blackouts: Building a Smarter Power Grid,” *Scientific American*, May 2007.
- [6] Arizona-Southern California Outages on September 8, 2011: Causes and Recommendations. Prepared by the Federal Energy Regulatory Commission and North American Electric Reliability Corporation. April 2012.

- [7] NIST, Smart Grid: A Beginner's Guide, <http://www.nist.gov/smartgrid/beginnersguide.cfm>.
- [8] "Technical Analysis of August 14, 2003 Blackout: What happened, why, and what did we learn?", North American Electric Reliability Council (NERC).
- [9] D. P. Shepard, T. E. Humphreys, and A. A. Fansler, "Evaluation of the Vulnerability of Phasor Measurement Units to GPS Spoofing Attacks." Sixth Annual International Conference on Critical Infrastructure Protection, Washington, D.C., March 19-21, 2012.
- [10] "GPS Jamming: No Jam Tomorrow," Technology Quarterly, The Economist, March 10, 2011. <http://www.economist.com/node/18304246>
- [11] Power Systems Relaying Committee, IEEE Power and Energy Society. "IRIG-B Time Code Accuracy and Connection Requirements: With Comments on IED and System Design Considerations." www.pes-psrc.org/i/IRIG%20Connection%20Requirements.doc
- [12] IEEE Standard Profile for Use of IEEE 1588 Precision Time Protocol in Power System Applications. IEEE Standard C37.238-2011.
- [13] IEEE Standard for Synchrophasor Data Transfer for Power Systems. IEEE Standard C37.118-2011.
- [14] K. Behrendt and K. Fodero, "The Perfect Time: An Examination of Time Synchronization Techniques," <http://www.selinc.com/literature/Literature.aspx?fid=282>
- [15] "Communication networks and systems for power utility automation - Part 90-5: Use of IEC 61850 to transmit synchrophasor information according to IEEE C37.118." IEC 61850-90-5 http://webstore.iec.ch/webstore/webstore.nsf/Artnum_PK/46356
- [16] J. Amelot, Y. Li-Baboud, C. Vasseur, J. Fletcher, D. Anand, and J. Moyne, "An IEEE 1588 Performance Testing Dashboard for Power Industry Requirements," IEEE International Symposium on Precision Clock Synchronization, 2011.
- [17] J. Amelot, J. Fletcher, D. Anand, C. Vasseur, Y. Li-Baboud, and J. Moyne, "An IEEE 1588 time synchronization testbed for assessing power distribution requirements," IEEE International Symposium on Precision Clock Synchronization, 2010.
- [18] J. Amelot and G. Stenbakken "Testing Phasor Measurement Units Using the IEEE 1588 Precision Time Protocol," IEEE Conference on Precision Electromagnetic Measurements, 2012.
- [19] D. Anand, J. Fletcher, Y. Li-Baboud, J. Amelot, and J. Moyne, "Using clock accuracy to guide model synthesis in distributed systems: An application in power grid control," IEEE International Symposium on Precision Clock Synchronization, 2010.
- [20] A.G. Phadke, "Synchronized Phasor Measurements in Power Systems," IEEE Computer Applications in Power, Vol. 6, No. 2, April 1993, pp.10-15.
- [21] D. Anand, J. Moyne, and Y. Li-Baboud. "Enhanced Criterion for Evaluating Phasor Measurement Units," January 2012, Unpublished.